

“Working Together for a Better Community”

NEROCHE VILLAGES

Issue No 2

Newsletter

November 2011

*For the Parishes of
Bickenhall, Curland, Orchard Portman with Thurlbear
and Staple Fitzpaine*

“In the bleak mid-winter frosty wind made moan”, as those of us who were snowed in twice last year will remember. Let’s hope that the coming months will be a little less harsh. Having said that, Neroche looked its beautiful best in the snow and it was a delight to see the children tobogganing down the slopes. Come what may, warmest seasonal greetings and all the best for the New Year from the Neroche Communication Action Group.

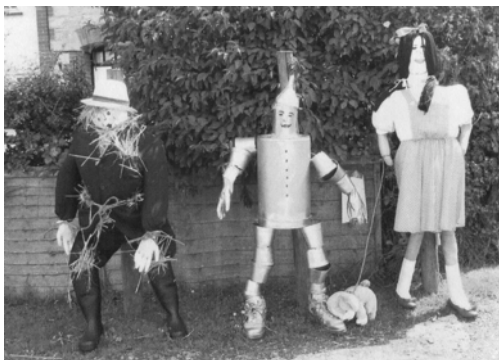


Welcome to the second issue of the Neroche Villages’ Newsletter which hopes to satisfy the need identified in the Parish Plan for a ‘hard copy’ local news and information medium delivered free to every household in Neroche Parish. The aim of this publication is to improve communication within the Parish by providing news and information on a wide variety of subjects and issues.

Staple Fitzpaine Inaugural Scarecrow Festival

The talent and imagination shown by parishioners in the 23 scarecrows making up the festival was truly amazing. 100 people voted for their favourite but many more did the scarecrow tour on foot, bicycle, car and even horseback.

First prize was awarded to the wonderful 'Wizard of Oz', in second place was 'Scarecrow's Day Off' and in third place was 'Freddie Mercury and Brian Hay', a 40th anniversary tribute to Queen. Already people are planning next year's scarecrows, so please put on your thinking caps and watch this space.



Report on Super-fast Broadband for Somerset

The County Council has embarked upon a project to deliver super-fast broadband to Somerset, however, not all households and businesses will enjoy the top speed of 20Mb-plus that is hoped for. To ensure that the interests of the users in Neroche are looked after, your Parish Council and the Neroche Communications Action Group have entered into a dialogue with the County Council's Broadband Project Team.

The broadband project is a Somerset/Devon joint initiative, which aims to deliver super-fast broadband by 2015. It is hoped to achieve 20Mb-plus for 85% of users, with the remaining 15% receiving a minimum, steady state service of 2Mb.

The total cost of the project will be in the region of £100M, this will be met by: a £30M government grant; £10M from Somerset; £10M from Devon; and £50M from the private sector. A timetable for the project has been set and the service will be delivered by means of a roll-out process, completed by 2015.

It is unclear if Neroche will fall into the 85% or the 15% but the important thing is that we continue to liaise closely with the team throughout the life of the project. Matt Ballard, the Project Team Leader, has agreed to give a short presentation to Neroche residents at the Annual Parish Meetings next spring, when he will be in a position to impart a lot more information.

What has become clear during this recent exchange with the Project Team is the importance of every user in the community completing the 'Online Demand Registration'.

Cont'd on next page

Cont'd from previous page

The results from this study is one of the main factors that will determine the quality/speed of broadband service that will be delivered to any particular area. Because of this, every user in the parish is strongly urged to go to the website www.somersetconsults.org.uk/consult.ti/connectivity/consultationhome and complete the questionnaire (once you have entered the site there is no need to 'log-on', simply click on the link "*respond by filling-in the online questionnaire*"). **It is emphasised that completing this questionnaire is a 'MUST DO' if Neroche is to stand the best chance of being included in the 85% that receives the 20Mb-plus service!**



Taunton Flyer Park and Ride

Taunton Gateway Park and Ride (near M5 Junction 25) provides free parking all day on the purchase of an adult return bus ticket into Taunton on the Taunton Flyer. The Park and Ride site has security staff, waiting facilities and public conveniences. Bus services are provided by accessible low floor buses. (NB. there is no overnight parking facility.)

Ticket Prices: Adult Day Return - £2.20
 Child Day Return - £1.30 (5-15 years old inclusive)
(Group, Weekly, Monthly, Annual and Flexi tickets are also available)

Service Times: Monday to Friday: 6:40am to 7:30pm / Saturday: 7:30am to 6:23pm
Services operate every 7 minutes at peak times and every 12 minutes at other times.
There are no services on Sundays or Bank Holidays.

For more details see website: www.parkandride.net/taunton/taunton_frameset.shtml

Police contact numbers

From 19th September 2011 you will be able to contact the Avon and Somerset Police by dialling 101. As part of a national programme to make it easier to contact local police, 101 will be used for non-emergencies such as; reporting a crime, contacting local officers, getting crime prevention advice, making the police aware of policing issues in the local area, making an appointment with an officer, any other non-emergency.

Key facts. 101 will not replace 999, which will continue to be used for emergencies. 101 will replace the existing 0845 number although, for 3 months, both numbers will be available. If you are deaf, hard of hearing or speech impaired, you can contact the local police by dialling 18001 101.

999 should be used for an emergency, when a crime is happening, someone suspected of a crime is nearby, someone is injured, being threatened or in danger.

Police Support Officers for Neroche. The police have revised their police beats and the new PCSO's for Neroche are PCSO 9981 Steve Chapman (mob 07917 529453) and PCSO 8784 Lynsey Gamblin (mob 07789 753820).

News from Neroche Parish Council (September 2011)

Affordable Housing

The survey recently commissioned by the Council has been delayed because of staffing changes at Somerset Community Council and the Parish Council will review the next steps at its January meeting.

Bickenhall Old Churchyard

The Woodland Trust currently have this small wooded area under management and are looking for a local group to take over responsibility. The land contains an ancient yew tree and three Grade II listed tombstones of the Portman family. Any organisation interested is invited to contact the Council on neroche.pc@nerochevillages.org.uk

Grit bin

Because the original grit/salt bin at the Curland/Broadway road junction has been stolen, the Highways Authority has agreed to replace it with a 'dumpy bag', which will be put in place before the winter gritting season.

Diamond Jubilee

The Council is still looking for suggestions as to how the Neroche area might commemorate this event - any suggestions please to the Council at neroche.pc@nerochevillages.org.uk

Music Festivals at Taunton Racecourse

Given local concerns about noise Members have invited a representative from Taunton Racecourse to meet them at the next meeting (10 November) to discuss the issue.

High Speed Broadband

The Somerset/Devon initiative to bring higher broadband speeds to the counties is receiving a lot of attention and members have been informed that to have any real chance of achieving the higher speeds locally it is essential that all local residents and businesses complete the 'online demand registration' at www.somersetconsults.org.uk/consult.ti/connectivity/consultationHome. Over to you!!

Blackdown Hills Community Plan

This plan, launched at the end of September, mirrors many of the issues raised in the Neroche Parish Plan. The impetus for the work comes from the authorities in Devon and members have asked to be kept informed on progress.

Traffic Speeds

Traffic was one of the issues highlighted in the Parish Plan and the Parish Council has persuaded the County Council to consider residents concerns and present its response to a meeting of members and the local Action Group. Although one or two minor initiatives have been undertaken on Staple Fitzpaine Road regrettably the County Council has as yet failed to come forward with its proposals and pressure continues to be applied for it to complete this work. The local Action Group is anxious to commission consultants to carry out a feasibility study and had sought the support from the Parish Council to a grant aid application. However members felt unable to support that application. Such studies are very expensive and members took the view that the opportunity should first be taken to examine what the County Council has to say. The Action Group have been invited to discuss the issues at the next meeting of the Council.

Retirement of Clerk

The Clerk to the Council (Peter Crossley) is to retire at the end of the year and any expressions of interest in taking up the post should in the first instance be made to the Chairman of the Council (Marianne Bray) on 01823 480888 or by e-mail to neroche.pc@nerochevillages.org.uk



The Future of Neroche Forest

SAWN Report on Progress - September 2011.

Following the submission of our response to DEFRA dated 11 May this year [previously reported upon in the July edition of the Parish Magazine], nothing was heard in response, other than the emailed acknowledgement of receipt, which was the result of our telephone and e-mail chase up.

The subsequent news on the DEFRA website, dedicated to the forestry review, however, has been that the Bishop of Liverpool, the Chairperson of the Review Panel, had a serious heart attack in early summer and has been on sick leave since this time. He is expected to return to work later this autumn, following heart surgery. We wish him a swift and successful recovery. Meantime, we understand that the panel have made two site visits so far, first to the Forest of Dean and secondly to Northumberland [Keilder Forest]. Reports on both of these are on the DEFRA website. Basically, they travelled by coach as a party, visiting key sites and meeting invited local people at an otherwise closed venue. Large placards appear to have been erected on the coach route by local residents at both visits!

At present [September], no such visit has been planned for Neroche, although the DEFRA website does list "Devon" as a site of a further visit this autumn. Accordingly, a further letter was carefully composed in August, as a supplementary to the earlier submission to DEFRA, but this time sent to the individual addresses of the panel members. Enclosed with each letter was a copy of the earlier submission to DEFRA, a paper copy of the home page on the Neroche Scheme website and a CD containing photographs of Neroche Forest taken through the seasons of the year. It appears that the response has been very positive, with acknowledgements just in from The Wildlife Trusts; The Confederation of Forest Industries and The Woodland Trust.

Our main message is that Neroche is important not only for its nature conservation and historical landmarks but with HM Government seeking more community involvement through 'the Big Society', Neroche is already there through the Neroche Scheme providing a shining, up-and-running model for others to follow!

We have already understood from speaking to DEFRA in London that our one copy of the book 'Along the Wild Edge' published by the Neroche Scheme this year and enclosed with our original submission has been augmented by the Forestry Commission delivering to them a further dozen copies!

We have a good case and good support, so we are hopeful of a favourable outcome. The danger lies to a lesser effect in the fact that the panel is comprised of the chief executives of the environmental organisations and not the chief scientists who perhaps have more passion and detailed knowledge and to a greater effect in the fact that they are only advising HM Government. The final decision will still be a political one.

Richard Westlake / Jane Hole

Joint chairpersons : Southwest Action for the Woodlands of Neroche

e-mail : sawn.westlake@gmail.com



Focus on Local Businesses in Neroche

There are in the region of 60 businesses operating from within Neroche Parish, the majority being small operations, many working from home. In the January 2011 Neroche Parish Plan Newsletter we focused on four, in this issue of the Neroche Villages Newsletter we highlight another two.

Chris Webb ~ Artist-Craftsman



Chris Webb works out of the Black Dog Studio in Bickenhall. He has been a ‘maker’ for 30 years, working mainly in Portland stone and in a variety of styles including contemporary, abstract and figurative. His completed sculptures have no name, he doesn’t theorise or debate the meaning of them, they are simply about him trying to make beautiful pieces, which make him smile. Chris is also able to undertake a wide range of architectural, restoration and bespoke work for interiors and exteriors, working in wood, stone or metal. Commissions he has undertaken include: sculptures in stone, garden and water features, metal work and ceramics.

As well as undertaking commissions, Chris has a number of stone sculptures and bronze resin sculptures that are available for sale now. For more details about how Chris operates and to see examples of his work go to his website at chriswebb-sculptor.co.uk or contact him at chris245w@yahoo.co.uk or phone him on 07973 953481.

Hayfield Cattery

Julie Clarke runs Hayfield Cattery in Bickenhall; it is located in a peaceful and idyllic setting with 7 acres of picturesque grounds that enjoy breathtaking views of the Blackdown Hills.

Julie’s main aim has been to establish an environment for her feline guests that mirrors, as closely as possible, the comforts of home. The recently constructed brick building enjoys the luxury of an air conditioning/heating system that provides a constant temperature throughout the year.



Julie is extremely enthusiastic about her work. She recognises that each cat is different and enjoys getting to know their characteristics during their stay, ensuring that they are afforded the attention and understanding that they would normally get at home.

For more information go to www.hayfieldcattery.co.uk or phone 01823 480732.

JACKSON ARCHITECTS



- *Extensions, large & small
- *New Houses
- *Listed Buildings
- *Barn Conversions
- *Swimming Pools
- *Green Oak frames
- *Creative and Inspiring designs
- *Traditional and Contemporary
- *Friendly, Professional and Practical
- *Free First Consultation

www.Jacksonarchitects.co.uk

Tel: 01823 214 502

**Jackson Architects is a local company.
Jason Jackson both lives and works in Thurlbear.**

*If you would like to advertise your business in the next
issue of the newsletter, please contact the editor.*

Report from the Neroche Traffic Action Group

Making roads safer for all users

In response to the concerns expressed by residents in the Parish Plan over a number of locations along the Staple Fitzpaine road into Taunton, the Traffic Group (NTAG) is seeking to carry out a traffic analysis along this section of road, which will form the basis of a report putting the case for a reduction in speed to be submitted to Somerset Council's Highways Department.

Following the example of Corfe (who were successful in their campaign for slower speeds), we are now working to raise money for professional support from a highways consultant in order to put our case as effectively as possible.

We recently expressed our concerns in a meeting with Jeremy Browne MP (who has subsequently written to The Rt Hon Philip Hammond MP on our behalf), and we will be talking with the Crown Estates, the NFU and Stagecoach in the coming months.

In September we submitted an application for funds from the AONB's Sustainable Development Fund, for costs related to the analysis of traffic data along the Staple Fitzpaine road and the preparation of a case for slower speed limits. Regrettably, Neroche Parish Council was unwilling to give a letter of support for the application as it is of the view that the Highway Authority should first be given the opportunity to have their proposals considered and therefore it was not appropriate at this stage to commit public funds. Unfortunately, we were not successful in our bid, the funding body preferring to support a Blackdown Hills wide campaign rather than those from individual groups. However, the AONB is keen to support our case in partnership with the Campaign for the Protection of Rural England and we are working with both organisations.

HOW CAN YOU HELP ?

£40 for 40 mph - if you feel that the maximum speed along Staple Fitzpaine Road should be 40 mph (reducing to 30 mph at hotspots), then would you be willing to donate £40 per household (or whatever you feel you can afford) to help support our case ?

Please make cheques payable to Neroche Traffic Action Group and post to our treasurer Richard Gledhill, Crossways House, Curland, TA3 5SL

We are also fundraising on **Sunday 4 December** at the Neroche Hall Christmas Fayre, where we will be selling Rosemary Sixsmith's book on the history of Staple Fitzpaine and the Forest of Neroche (now out of print), along with homemade biscuits, sweets and produce. You can also find out more about our campaign.

Collecting traffic data

If you witness or hear of a road accident please would you take a brief description of what happened, when and where it happened and if you have a picture all the better. Please send this information to: Wendy Morris at staplemead@waitrose.com or telephone 01460 234 445.

If you would like to join the Traffic Action Group please contact Ann Jones a.jones939@btinternet.com or call 01460 234 774/07909 963509

On Our Doorstep

There are numerous activities taking place within the Parish that are well advertised in the Parish Magazine and on the community website. However, there are many more happening in the general area that you might not know of; here are a few that you may find of interest....

Blackdown Hills AONB Countryside Events Programme. The Blackdown Hills AONB Partnership produces a programme of activities titled 'Blackdown Hills Countryside Events'. The recently published programme for autumn/winter 2011/12 is packed with a variety of activities. This winter why not join them to hunt for mushrooms or sing carols around a bonfire? Learn woodcarving, nature photography or hedge laying - you can even get creative with rustic Christmas decorations. If you have a family of outdoor explorers, they will love the wildlife camps, bird box making and a trip back to the Iron Age. A small selection of what is on offer includes:



Saturday 12th November. A day in the forest with artist Michael Fairfax learning how to design and carve lettering in wood.

Saturday 3rd December. Learn the traditional skill of hedge laying with experienced instructors from the Blackdown Hills Hedge Laying Association.

Sunday 4th December. Come and make beautiful festive decorations with willow and hedgerow material.

Wednesday 11th January. A practical day of every aspect of tree planting to include guards, types of trees, soil effects, timing, spacing, transplanting, undercutting, seeds and more.



Sunday 12th February. An introduction to basket making.

...and the list goes on. For full details of all courses, events and details of how to apply please go to www.blackdownhillsaonb.org.uk.

Royal British Legion Festival of Remembrance (6th November at 6.30pm)

Taunton RBL is reinstating The Festival of Remembrance in support of the Legion Poppy Appeal. There will be around 500 performing marching displays, dancing, bands and some surprise appearances. It is being held at the Wellsprings Leisure Centre; for more info please email: tauntonfor2011@hotmail.co.uk.

Cont'd on next page

On Our Doorstep - cont'd from previous page

Horse Racing

We are most fortunate to have England's youngest National Hunt racecourse, and one of the most beautifully located in the country, situated within our parish. It has outstanding views across to the wooded slopes of the Blackdown Hills, with excellent access from all areas of Neroche. There can be no better way of entertaining your family or friends than a day at the races - 'The Sport of Kings'. By the time you receive this Newsletter the 2011/12 winter season will have started, with the next race taking place on 10th November. For full details of fixtures, ticket prices, facilities, etc go to www.tauntonracecourse.co.uk.

Car Boot Sales

A Car Boot sale is held every Sunday at the racecourse, 52 weeks a year and in all weathers. Gates open at 11am (9am for sellers; cars £5, vans £6). For more info call Tracey on 07778 275998.

Other Events For Your Calendar

3 Nov 2011	Thursday lunch club	Neroche Hall
8 Nov 2011	Senior Citizens Club (Neroche residents are welcome)	Stoke St Mary Hall
10 Nov 2011	Race meeting	Taunton Race course
10 Nov 2011	Neroche Parish Council Meeting	Neroche Hall
24 Nov 2011	Race meeting	Taunton Race course
1 Dec 2011	Thursday lunch club	Neroche Hall
1 Dec 2011 (evening)	The Budapest Cafe Orchestra	Neroche Hall
2 - 31 Dec 2011	Alice In Wonderland (pantomime)	Brewhouse Theatre
4Dec 2011	Christmas Fayre	Neroche Hall
6 Dec 2011	Senior Citizens Club Christmas Dinner (Neroche residents are welcome)	The Master Thatcher Taunton
8 Dec 2011	Race meeting	Taunton Race course
13 Dec 2011	Senior Citizens Club Christmas Party (Neroche residents are welcome)	Stoke St Mary Hall
20 Dec 2011	Race meeting	Taunton Race course
30 Dec 2011	Race meeting	Taunton Race course
5 Jan 2012	Thursday lunch club	Neroche Hall
21 Jan 2012	Grand Annual Jumble Sale	Neroche Hall

Calendar events are in addition to the normal meetings of Neroche Clubs and Organisations.



NEROCHE HALL CHRISTMAS FAYRE

SUNDAY 4TH DECEMBER 2 – 5PM

Featuring Father Christmas and other seasonal entertainment

Produce, arts and crafts, competitions

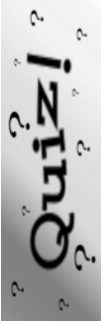
**Anyone wishing a stall please contact
the treasurer Anne Perry on the website:-
nerochehall.org.uk
or 01460 234377
for further details.**

A fabulous start to the festive season

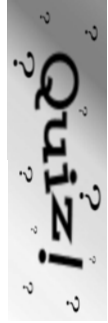
Neroche Hall Grand Jumble Sale

On **Saturday 21st January 2012** the Hall Committee are planning to run a **Jumble Sale** in the **Neroche Village Hall**. The event organiser will be Rob Larkman (email: robjoy72@googlemail.com) and full details will be published in November / December.

Neroche Hall Fish'n'Chips Quiz Night

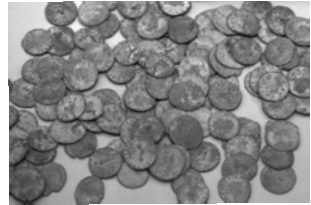


Fifteen teams took part in the Neroche Hall Quiz on Friday 7th October. The fish and chips, together with the 'bring your own wine' added to the success of the evening, which judging from the happy mood of the competitors, suggests a good time was had by all. The winners were a team of 6 called 'TLA', led by octogenarian Mick Donovan. They turned in a wonderful performance, scoring 95 points out of a possible 110, a clear indication of the breadth of their knowledge. TLA carried off the prize of 6 bottles of wine. The committee of Neroche Hall really appreciate the support they get from the community for such events. (report by Colin Croad)



Somerset Museum

The Museum of Somerset, located in Taunton Castle, threw open its doors on Thursday 29th September following a £6.93m redevelopment. The event marks the end of six years of hard work to create a new museum for the county. During the opening ceremony Tom Mayberry, Somerset County Council's head of heritage, welcomed visitors and thanked those involved in the project. The Heritage Lottery Fund contributed £4.8m towards the redevelopment cost. Sam Hunt, of the fund, said "the museum has a terrific wow factor" adding that "this museum is one of the finest I've seen in the UK".



Members of Taunton Garrison then marched, in 17th Century dress, to Taunton Castle gates in an English Civil War style re-enactment where they demanded entry in the name of Parliament.

Each of the first 100 visitors received a souvenir biscuit in the shape of a boot commemorating the words of Colonel Robert Blake, who, while defending the castle for Parliament in 1645, declared he would eat three of his four pairs of boots before he surrendered.

The museum now has 50% more space which is being used to display many more objects, some of which have not been on public view before. Among the new items in the museum is the Frome Hoard, the largest find of Roman coins in a single container in Britain. There's also the Rebellion Gallery dedicated to the Monmouth Rebellion in 1685, and the resulting trials known as the Bloody Assizes, which took place in Taunton Castle. The museum is free to enter and is open between 10am and 5pm from Tuesday to Saturday and Bank Holiday Mondays.



New Library Opening Hours

From October, the opening hours for some of Somerset's libraries will change.

The changes, which take effect from 17th October 2011, will see the opening hours at many of our local libraries reduced by a fifth. Each library will continue to provide the full range of services and the pattern of opening hours will continue to reflect local preferences as far as possible. Full details of the services and new opening hours at each library are available on the website: www.somerset.gov.uk/libraries.

The opening hours for Taunton's library, in Paul Street, are:

Monday:	Closed
Tuesday:	9:00am to 5:00pm
Wednesday:	9:00am to 6:00pm
Thursday:	9:00am to 5:00pm
Friday:	9:00am to 5:00pm
Saturday:	9:30am to 4:00pm
Sunday:	Closed



(Note that the opening hours for other local libraries will be different, please refer to the website for details or phone: 0845 345 9177.)

CLERK TO PARISH COUNCIL

Neroche Parish Council seeks a Clerk. This post is part-time involving 5 hours each week on average. You will be expected to handle the formal minutes, agendas, and correspondence of the Council. Meetings take place bi-monthly.

Previous experience/ AQA Certificate in Local Council Administration is desirable but not essential and training will be given to the successful candidate.

The salary will be per the National recommended salary scale starting at £ 8.747 per hour rising by 4 annual increments.

Closing date: 3rd November 2011 with commencing date 1st January 2012

An information pack and application form can be obtained from:

Marianne Bray
Cromwells, Abbey Hill, Bickenhall,
TAUNTON, Somerset TA3 6UD
marianne.bray@btinternet.com or by telephone on 01823 480888

October 2011

Bank Holiday Household Recycling & Refuse Collection Day Changes for Christmas & New Year 2011/12



Your usual collection day		Your revised collection day	
Friday	23 Dec 2011	No Change - usual collection	
Monday	26 Dec 2011	Tuesday	27 Dec 2011
Tuesday	27 Dec 2011	Wednesday	28 Dec 2011
Wednesday	28 Dec 2011	Thursday	29 Dec 2011
Thursday	29 Dec 2011	Friday	30 Dec 2011
Friday	30 Dec 2011	Saturday	31 Dec 2011
Monday	2 Jan 2012	Tuesday	3 Jan 2012
Tuesday	3 Jan 2012	Wednesday	4 Jan 2012
Wednesday	4 Jan 2012	Thursday	5 Jan 2012
Thursday	5 Jan 2012	Friday	6 Jan 2012
Friday	6 Jan 2012	Saturday	7 Jan 2012
Monday	9 Jan 2012	No Change - usual collection	

Garden waste collections are suspended from Monday 26 Dec 2011 and start again on Monday 9 Jan 2012.

Clinical waste will be collected on revised collection days as above.

Natural Christmas trees under 6ft can be collected. If you pay for garden waste collections you can put them out on normal garden waste collection days for composting. Otherwise, take to Recycling Centre or put out the tree on your normal refuse collection day between 9 and 20 January 2012 for disposal. Place the tree next to your bin or sack. **Remove all decorations.**

During periods of severe weather, please check the Somerset Waste Partnership website (www.somersetwaste.gov.uk) or local radio for service updates.

New Beginnings Carnival Club



The New Beginnings Carnival Club has been running for 7 years and is the last surviving club to be based in Taunton. The club has been building 'carts' in Staple Fitzpaine from the very beginning thanks to the generous help and support of their deputy chairmen Andrew Lock and his brother Trevor.

The club features a 'Tableaux Cart', which means that the members stand still on the cart to act as a scene frozen in time. Last years entry was 'Over the Rainbow' which

they felt was one of their best so far. The carnival judges obviously agreed as, for the first time, they won the overall Tableaux Federation Cup, a huge achievement.

They feel that this years entry 'Mickey's Choo Choo Express' has 'topped' last year's, especially as the cart now has a built-in tractor unit.

(Editor's note: I have included photographs of this year's and last year's carts but, as the newsletter is not printed in colour, it is impossible to do justice to them.)

New Beginnings rely heavily on various fundraising efforts to continue producing their spectacular carts. These efforts include bingo at the Nags Head tavern, car washing and attending local fetes and equine events with stalls such as 'Hook-a-Duck', tombola and refreshments. They also have a 'disco' which is available for hire. However, fundraising gets harder every year and they are always looking for help and/or sponsorship.

The club is small with only about 20 members, but they have a lot of fun and would love to welcome new members, especially families, who are willing to join the madness! It is very much a family based club with the youngest member being only 3 years old, and the oldest 69.

To contact New Beginnings, to discuss joining or anything else, please phone Andy Lock on 07808 713247 or contact the secretary (Charlene) by email at: chazlock@hotmail.co.uk

The Somerset Carnival season continues in Bridgwater on 4th November.



Neroche Clubs and Organisations

Badminton Club

The Badminton Club meets in the Neroche Hall from 2.00pm to 4pm on Thursdays.

Contact: Molly Reynolds (01823 332938) or Daphne Brightwell (01823 480548)



Neroche Short Mat Bowling Club

The Bowling Club competes in the Taunton & District SMB League, home fixtures are in the Neroche Hall at 7.30pm on Thursdays between September and April.

Contact: Rob Larkman robjoy72@googlemail.com

Neroche Folkdance Club

The Folkdance Club meets at the Neroche Hall on Mondays from 8.00pm to 10.00pm. Dances range from Playford, Manor House, American Contra and Barn.

Contact: Liz (01823 278739) or Joy Larkman (1460 234237)

Thursday Lunch Club

The Lunch Club provides a two-course lunch (for a minimum £5 donation, pre-booking required) on the first Thursday of the month in the Neroche Hall.

Contact: Alison Brown (01823 480441) alison-anthony@battensfarm.fsnet.co.uk

Bickenhall and District Women's Institute



The Women's Institute has a full programme of activities and interests such as art, music, handicrafts and competitions;. They also take part in the Christmas celebrations at Wells Cathedral. Meetings are at 7.30pm on the second Wednesday of the month (except August) in the Neroche Hall.

Contact: Di Grabham (01823 480811)

Staple Fitzpaine Bellringers

The Bellringers meet at St Peter's Church on Fridays between 8.00pm and 9.00pm. For further details go to their website: www.staplingers.co.uk.

Contact: Paul Hart (01823 480769) paul@underhill.myzen.co.uk

St Peter's Singers

The Singers meet at St Peter's Church on Thursdays between 7.00pm and 8.30pm.

Contact: Julie Pope (01823 480282) or Georgina Leech (01823 442223)

Cafe Fitz - open for tea, coffee and cakes every Saturday from 10.00am until 12 noon in St Peter's Church.

British Association for Shooting and Conservation (BASC)

BASC is based at Smokey Bottom, Staple Fitzpaine and their mission is to promote and protect sporting shooting and the well-being of the countryside.

Contact: BASC, Smokey Bottom, Staple Fitzpaine TA3 5BL (01823 480903) for information on their activities and courses.



The Crewe

The Crewe is a youth group for 11 to 16 year olds who meet on the second Sunday of the month at various venues.

Contact: Joy Garland (01823 331853) jeffrey@garland.plus.com

Neroche and Hatch Beauchamp Garden Club



The Garden Club's monthly meetings take the form of talks by guest speakers at either the Neroche or Hatch Beauchamp Village Hall or may involve visits to garden nurseries or gardens of particular interest.

Contact: Wendy Morris (01460 234445) staplemead@waitrose.com or Joy Larkman (01460 234237) robjoy72@googlemail.com

Neroche Local History Group

The History Group allows residents the opportunity to explore the history of the parish and surrounding areas. Research is encouraged and presentation of findings makes up about half the meetings which often feature external specialist speakers. Meetings are held six times per year in the Neroche Hall on the fourth Wednesday of the month from 7.30pm to 9.00pm.

Contact: Jane Hole (01460 234410) jane.hole@fiscali.co.uk

St Peter's Church

St Peter's Church nestles in the heart of Staple Fitzpaine.

It holds a number of events throughout the year in the church, at Neroche Hall and around the parish.

Contact: The Rector: Rev Paul Reynolds (01823 444023) or the Church Wardens: Alison Brown (01823 480441), Mal Lee (01460 234282)



A more comprehensive list of clubs and organisations, including details of those in neighbouring parishes, features in the Community Website launched earlier this year. (www.nerochevillages.org.uk or Google Neroche Villages.)

Neroche Parish Council

Parish Council elections were held in May 2011 and the following is the resulting list of Parish Councillors and other local government representatives. The next Parish Council meeting takes place on Thursday 10th November at 7.30pm in the Neroche Hall. Members of the public are welcome to attend and are able to make representations or give evidence on the issues under consideration before a decision is made by members. Agendas and minutes for Parish Council meetings are published on the website: www.nerochevillages.org.uk.

Clerk to the Parish Council - Peter Crossley

neroche.pc@nerochevillages.org.uk

01823 480218

NB. Peter is due to retire at the end of the year.



Bickenhall Parish

Adrian Aplin

neroche.pc@nerochevillages.org.uk



Chris Baxter

neroche.pc@nerochevillages.org.uk

07968 137038



Wally Torrington

wallytorrington@hotmail.com

01823 480656 / 07887 532842



Curland Parish

Marianne Bray

neroche.pc@nerochevillages.org.uk

01823 480888

(Chairman of the Council)



John Parsons

lhservices@fsmail.net

01823 480954



Karen Street

r.street125@btinternet.com

01823 480285



Orchard Portman with Thurlbear Parish

Jason Jackson
neroche.pc@nerochevillages.org.uk
01823 443742



Lynne Spoons
lynne.spoons@bt.com

Ian Parker
i.parker@ashclifford.co.uk



Staple Fitzpaine Parish

Jonathan Bell
neroche.pc@nerochevillages.org.uk
(Vice-chairman of the council)



Andrew Macey
neroche.pc@nerochevillages.org.uk
07531 819810



Mark Pope
neroche.pc@nerochevillages.org.uk
01823 480282



Taunton Deane District Councillor
John Williams
cllr.j.williams@tauntondeane.gov.uk
01823 480058



Somerset County Councillor
David Fothergill
djafothergill@somerset.gov.uk
01823 443740



MP:
Jeremy Browne
01823 337874
brownej@parliament.uk



MEP:
Graham Watson
01458 252265
info@grahamwatsonmep.org



Local Communication and Information

There are several ways of keeping in touch with what is happening in our locality.

Local websites:

Neroche Villages – www.nerochevillages.org.uk – our community website run by the Neroche Communication Action Group. It has an up-to-date calendar of events; a news section; Information about residents' action groups, e.g. on broadband, traffic, forests; a business section and advertisements. It is also the website of Neroche Parish Council and lists its activities, agenda, minutes and official documents.

Neroche Hall– www.nerochehall.org.uk - lists the coming events, facilities and availability for hire of our village hall, and has an online booking form.

The Church of England Benefice – www.sevensowers.org.uk - has a calendar of events and church service times.

Email Information:

The Neroche Communication Action Group runs an email systems for sending information to those wishing to receive it. It forwards information of a general nature about local events and issues - please use the contact form on the Neroche Villages website if you would like your name added.

The Parish Magazine:

A great source of news, coming events and general information, particularly of local businesses and services, in addition to full information of benefice matters.

Parish Council. If you would like to receive regular Parish Council information eg on changes to services (such as refuse collection), police local crime reports, emergencies or dates of meetings etc then send your name and address followed by “***YES PLEASE***” to Peter Crossley, the Parish Clerk at neroche.pc@nerochevillages.org.uk. To keep ‘up to speed’ with the activities of your Parish Council, go to the new community website at www.nerochevillages.org.uk. You will find a wealth of information on the website, including: agendas and minutes of meetings, news, views and general details, plus a facility to ‘have your say’. Council meetings are open to the public; so if they are discussing a subject in which you are interested, please feel free to attend.

General Information. For general information on the implementation of the Parish Plan recommendations and the residents’ Action Groups go to www.nerochevillages.org.uk. This link will take you to the new Neroche Community website which is being developed and maintained by the Communications Action Group. For information on the Parish Hall please go to its website at www.nerochehall.org.uk.

Many thanks for taking the time to read this Newsletter. The views expressed in this newsletter do not necessarily represent those of the editor or the Neroche Communication Action Group. Publication of an advertisement in, or with, the newsletter does not imply the Action Group’s approval of the goods or services.

Project Coordinator: ***Wally Torrington***
wallytorrington@hotmail.com

Editor: **Alan Perrior**
alanperrior@yahoo.co.uk

Printed by David Symmonds
01823 480208 davidsym@gmail.com

Official Photographer: David Spears
david@cloudshillimaging.com