

Working Together for a Better Community

# NEROCHE VILLAGES Newsletter

For the parishes of Staple Fitzpaine, Bickenhall, Curland  
and Orchard Portman with Thurlbear

Issue 49 - Autumn 2023



*The Hand of God*

Welcome to the Neroche Villages' Newsletter, a quarterly publication delivered free to every household in Neroche Parish, helping the community to stay connected and up-to-date on local issues.

## Neroche Scarecrow Festival

An innovative theme was agreed for this year's scarecrow festival – 'Saints and Sinners', and not surprisingly this gave a great deal of latitude to all the budding builders. In the final tally it was a fairly even split between those classed as saints and those deemed to be sinners, but perhaps with some 'up for grabs'!

While slightly down on scarecrow numbers compared to last year, there were still enough to ensure that 'the tour' was fun, even if you had to pick your day carefully to avoid the unwelcome July rainfall. With voting forms in hand and following Alison's 'not to scale' map, families could be seen walking, driving or cycling around the route, stopping to look carefully at each creation.

The saints were represented by St Peter and the Pearly Gates, with a suffragette chained to the gates, overlooked by St Peter making his judgement call on her right to entry. Also, St Christopher, carrying a baby, both resplendent in knitted halos. We had the Superhero Saints, an eclectic collection of superhero characters, along with Saint Bernadette Soubirious, sat in front of the stream where she saw the visions which inspired the building of chapels at Lourdes.



*St Peter and the Pearly Gates*



*St Christopher*





*Superhero Saints*

Sinners were from the world of politics, literature, and religion – Vladimir Pukin’ brilliantly portrayed in jail, with a great deal of gruesome expanding foam coming out of his mouth, alongside a rather realistic tank! The Dark Lord stood menacingly at the end of a



*St Bernadette Soubirous*



*Forbidden Fruit*

driveway, accompanied by his serpent and yew wand, a true manifestation of evil. Eve tempted many passersby with her forbidden fruit, while also tangled around a serpent.

Some scarecrows combined the two or left you to make your own decision – Saint or Sinner?, the Just Stop Oil protestor in a ditch, while the Sherwood Saints and Sinner was a clever take on Robin Hood, Maid Marian, along with the truly bad Sheriff of Nottingham. Lots of very clever details could be seen on this group of scarecrows. The Hand of God depicted Maradona’s infamous handball at the 1986 World Cup, while the

crowd scene hosted many famous saints and sinners. Many people said they had lots of fun identifying all the faces, which were artfully drawn.

Unfortunately, the weather had a detrimental impact on the mid-week tea, although the BBQ was well attended despite early rain. It was lovely to see so many families there, and the results were a testament to the number of scarecrows which had been created by our younger parishioners. Watch out all you adults – the children are coming!

Overall Winners –

First Place – The Hand of God (John and Karen Learoyd, and Carole Wensley-Dodd).

Second Place – Vladimir Pukin’ – (Harry and Millie Parsons).



*Vladimir Pukin'*

Third Place – Sherwood's Saint & Sinner – (Maya and Theo Lewis).



*Sherwood's Saint & Sinner*

Children's Awards –

First Place – Vladimir Pukin’ – (Harry and Millie Parsons).



Second Place – Sherwood's Saint & Sinner – (Maya and Theo Lewis).

Third Place – The Dark Lord – (Willow, Frank and Poppy Chapman).



*The Dark Lord*

Alison thanked everyone who made a scarecrow, and everyone who helped at the BBQ, and also to Mark Porter who allowed a brief but tantalising visit to the top of the bell tower where some toys were parachuted to the ground! There is a lovely sense of community at this gathering and during the whole week, a great fund raiser for St Peter's Church, but don't underestimate the work involved for everyone who takes part.

Thanks must also go to Alison for organising another very special Scarecrow week.



*Make Up Your Own Mind*



*Saint or Sinner*

## **From the Parish Council**

***By Mark Palmer, Chair***

It has been 12 months since the idea of reviewing the Neroche Neighbourhood Plan was first discussed. After careful consideration, the subcommittee decided to carry out a Community Plan instead. Community Plans are less restrictive than Neighbourhood Plans, which are primarily focused on the built environment. Community Plans can cover a wider range of topics, such as climate change, the environment, and health and well-being. They also take significantly less time to complete.

The Community Council for Somerset, with funding from Somerset County Council, provided support for parishes to formulate a questionnaire, host it online, and bring together the answers to produce a final report on areas the community would like local government to focus its attention. This review will enable the Parish Council and Somerset Council to work together to improve the lives of residents in Neroche.

I would like to personally thank the group of people, both parish councillors and parishioners, who have spent many hours on this project. Their hard work and perseverance has led to a successful conclusion to this review.

I would also like to thank all the parishioners who took the time to complete the online questionnaire. Your feedback was invaluable in helping us to understand the priorities of the community.

I am confident that the findings of this review will help to shape the future of Neroche. Together, we can make our community a better place to live, work, and raise a family.

I would like to remind residents that the parish council still has vacancies so if you would like to come and join us you are more than welcome. On that note I would also like to remind members of the public wishing to attend that parish council meetings have now changed to the second Tuesday of each month.

Thank you.





# Neroche Community Review 2022-23



## Executive Summary



**Supported by**



## Introduction

This Community Review report has been produced by using survey information collected and collated by Community Council of Somerset (CCS) from the respondents of Neroche Parish during March 2023. An analysis of the survey questions was undertaken by use of Survey Monkey and this with commentary can be found in the main body of the report.

This Community Review contains information that can be used to identify the needs of the parish, now and in the near future, it can also help inform Neroche Parish Council in its decision making, and its communication with Somerset Council.

Details of the methodology adopted for the survey questionnaire can be found in the main part of the report.

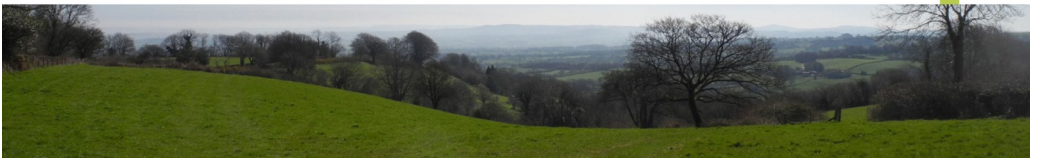
Within the main part of the report, the response to each question is clearly represented as a bar chart. Below each bar chart, the key findings associated with each individual question are commented on and discussed. Action points for both the Parish Council and Community Groups can be found in the Action Plan and Prioritisation page.





## Key highlights from the survey include:

1. A good response rate to the survey was achieved from Curland, Staple Fitzpaine and Bickenhall villages.
2. Compared to the 2010 Neroche Parish Plan, climate change, individuals' carbon footprint, the importance of biodiversity, maintenance of boundary features such as hedges and ditches and the management of the environment in general are now recognised as being of real importance. All of which have an impact on the character of the landscape.
3. There is interest for local initiatives such as wildflower planting and exploring the feasibility of developing green corridors to link habitats for nature and wildlife.
4. The majority of respondents would like to see the parish retain its rural nature.
5. Respondents highlighted traffic speeds, access to public transport and the maintenance of the road surfaces need to be improved. There is concern the duelling of the A358 is likely to increase traffic volumes locally.
6. The importance of Rights of Way (ROW) as a form of local amenity came across strongly for the whole of the community. Landowners should keep ROW free of obstructions and should ensure footpath and bridleways are properly maintained.
7. Broadband speed and mobile signals are in general still deemed to be inadequate. The rollout of faster broadband speeds may be addressed later in 2023.



8. The potential development at Orchard Portman is opposed by the vast majority of respondents. The whole of the Parish including Orchard Portman is currently classed by Somerset Council as Open Countryside. This designation does not allow for major housing development.

9. Responses suggest there is a strong sense of community within the parish with a good range of events being held at Neroche Hall.

10. The Parish Newsletter, Church Parish magazine and E-mail alert are the most commonly accessed sources of information. Improvements to the Neroche Village website and parish notice boards need to be reviewed to help improve their use and impact.

11. The relatively old age of the community, means few children live within the parish. Ideally young people should be asked what activities they would wish to engage with in the community. The majority of employed people by local businesses work from home and the biggest improvement to this role would be increased broadband speed.

12. Respondents would like the Parish Council to be more pro-active particularly with statutory authorities where enforcement action is required.

13. Respondents would support the Parish Council taking in contracts for ditch maintenance and hedge cutting where appropriate.

14. As a result of the Focus Groups there is potential for developing two community action groups. One on environment/climate change and the other on Rights of Way.





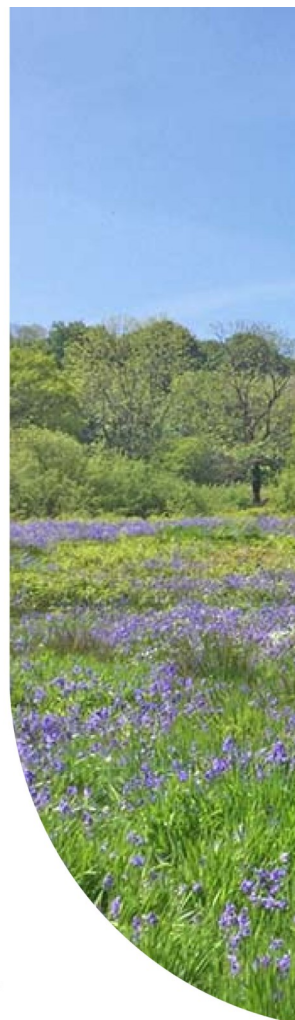
## What next

It is clear that some of the issues raised by the survey can be readily addressed, while others are more deep-rooted and more difficult to solve. However, the survey will help inform decision making, and where effort and funding should be predominately focussed within the parish. Resolve and action by both the Parish Council and Community Groups will be necessary to accomplish some of the desired changes.

### Privacy Statement

Analysis was conducted by Smart Communities Ltd part of Community Council for Somerset (CCS) Group. Data was captured for legitimate and contractual purposes. Information was collected and analysed in accordance with Smart Communities Ltd role as a Data Controller and Data Processor.

If you would like to find out more about how we use your data or want to see a copy of information about you that we hold, please contact [info@somersetccc.org.uk](mailto:info@somersetccc.org.uk) or call 01823 331222. Protecting your Personal Data is important and we fully comply and adhere to the Principles of Data Protection set out in our Data Protection / Privacy Policy visit: [ccslovesomerset.org/smart-communities-ltd-policies/](https://ccslovesomerset.org/smart-communities-ltd-policies/).



# Community Review

Your future plan

Delivered by



smart  
communities  
part of the CCS group

On behalf of



Supported by  
SALC  
SOMERSET ASSOCIATION OF LOCAL COUNCILS

Funded by



Somerset  
Council

**The full Neroche Community Review Report and the Neroche Community Review Action Plan are available on the new Neroche Villages website. For details see <https://www.nerochevillages.org.uk/news>**

## ***Stop Press ▪ Neroche Community Review ▪ Stop Press***

**Two New Action Groups are beginning with exciting opportunities for making a real difference to our parish**

### **Environment Action Group**

The inaugural meeting of the group is on 14th August.

Amongst our potential projects for the parish are:

- Looking at developing a wildflower planting scheme
- Exploring the possibility of developing a green wildlife corridor for nature
- Mapping all the oak trees in the parish
- Learning what steps we can take to reduce our carbon footprint
- We will be advised by a nature conservation expert from the AONB

New members are very welcome. If you would like to know more or are interested in joining, please contact Jane Hole

[jane.hole@nerochevillages.org.uk](mailto:jane.hole@nerochevillages.org.uk) ☎ 01460 234410

### **Footpaths and Bridleways**

For more information about working with the Rights of Way Action Group please contact Sue Hayman

[sue.hayman@nerochevillages.org.uk](mailto:sue.hayman@nerochevillages.org.uk)



# BARN DANCE

## NEROCHE HALL

Bickenhall, TA3 6TY

**Saturday, 4<sup>th</sup> November**

**7.30pm**

**MUSIC from The Badger Street Band**

**BAR – RAFFLE**

**Supper Included**

**TICKETS: £15 in advance only**

**(£10 for under 16s)**

**FROM: Sarah Hyde 01823 481094**

**[Mrshyde147@gmail.com](mailto:Mrshyde147@gmail.com)**



## News from Neroche Hall

*By Karen Learoyd*

Our recent AGM marked the end of my first year as Chair of Neroche Hall and I feel that I've learned a lot in quite a short space of time! The responsibilities are broader than I originally anticipated, although I've been grateful for the help and support of the Committee members. We have tackled quite a lot between us in that time, and I feel that we are making some positive improvements to the Hall and its running.

Having an impassioned caretaker/cleaner has enabled us to tackle a lot of smaller maintenance tasks that had been somewhat neglected over the past few years, and it's heartening to hear that 'the kitchen hasn't been so clean in years' or that 'the floor always looks so well polished'. It also makes the hiring of the Hall much more attractive, and we are delighted to have two wedding receptions/blessings already booked for the autumn.

We have also been rectifying some of the 'red flags' that had been identified in electrical inspections and fire assessments and have replaced several of the emergency lighting units which were faulty. During August, we are replacing three of the AC/heating units and swapping around another so that all the heaters can be set on timers and be controlled by just 2 remotes. With the latest technology in place, we are confident that last year's heating issues will be resolved, although we need to be aware that the size of the building will always make it cooler than your snug room at home!

Unfortunately, our Pilates class has now stopped due to declining numbers, although we are really pleased that Ness Bourne has started up a new Yoga class on a Tuesday morning – hopefully more people will join after the summer holidays. Thanks to everyone who has been tucking into their Monday night pizza – our Nom Nom partners are delighted with numbers and have told us Neroche Hall is one of their busier pitches. Who needs Uber

Eats or Deliveroo when you have delicious pizzas on your doorstep every couple of weeks...

As Autumn advances we are in planning for several events – the Craft Fair will take place on Saturday, 21st October, and we are lining up new stallholders to complement our regular exhibitors. The Barn Dance has been rescheduled to November 4th, with the fabulous Badger Street Band providing the music – get your dancing shoes warmed up....

Our ever-popular Fish 'n' Chip quiz is returning on Friday, November 24th, with the excellent Mike Michaels at the helm as quizmaster. Make sure you put all those dates in your diary – it's going to be a busy few months.

And finally, I'm delighted to introduce Sarah Hyde, who has taken over as Booking Secretary. Sarah joined us at the AGM and is a very welcome addition to the team. However, we would like more... If you are new to the area, and would be interested in finding out more about the Hall, getting to know people locally, and become a part of the community, we would love to hear from you...

Do contact me at [karen.wensley@gmail.com](mailto:karen.wensley@gmail.com).

## Pop-Up Café

**St Peter's Church, Staple Fitzpaine  
Every Friday, 10am to 12pm**

Come along for a cuppa with biscuits and delicious home-made cakes.

Meet old friends and make new ones

For more information contact

**Tricia Dryden  
[tricia@witchlodge.co.uk](mailto:tricia@witchlodge.co.uk)**



# SOMERSET



## COUNTY SHOW

### TAUNTON RACECOURSE

September 16<sup>th</sup> and 17<sup>th</sup>

Pony Racing

Pygmy Goats

Dog Trials

British Scurry

Classic Cars

Live Music

Artisan Stalls

Gun Dog Demonstrations

Miniature Horse Show

Ferret Racing

Falconry

Meet the Beagles and  
Hounds

Cider and Beer Festival

Cookery Demos

Early bird Tickets available

[www.somersetcountyshow.co.uk](http://www.somersetcountyshow.co.uk)



## There is no Dog Poo Fairy!

Lots of us have dogs and enjoy walking them; most people clear up after their dogs, but some don't, and this can lead to less pleasant walks. In our Community Review 79 of 137 respondents stated that dog poo is the No 1 contributor to spoiling their enjoyment of Public Rights of Way and our lovely countryside.

Please let Neroche Parish Council know when you come across collections of dog poo by emailing [nerochepc.org.uk@gmail.com](mailto:nerochepc.org.uk@gmail.com) with the location and a photo if possible. If you have the free App 'What3words.com' it would be most helpful in identifying the 'hot spots'. This information will help inform future decisions and actions by your parish council.

There is a danger of infection from dog faeces to other animals, including other dogs, which can catch Toxocariasis and in turn infect the family, especially small children, sometimes with very serious results. Living in the countryside we must also be aware that dog faeces can also cause spontaneous abortion in cattle and sheep. If you do walk across farmland, it is most important that you collect your dog's waste and remove it, to protect the farm animals that may use the fields after you have walked them.

Forestry England's advice was to use a stick and flick it away from the path, although recent research has shown that chemicals in dog wormers actually destroy the very bugs in the soil that break down the faeces, so dog faeces have an even greater impact on our environment than simply being something extremely unpleasant to step in!

When walking your dog, current advice is that you bag it and dispose of it away from the scene. You do not have to seek out a specific dog waste bin, you can put it in your own domestic waste bin at home as long as it is double bagged. If you are concerned about using plastic, use biodegradable bags for more than just one poo, place that bag inside a previously used single use bag and then put it in your own bin.

**Whatever you do, don't bag it and leave it in the countryside where you have been walking.** Plastic collections bags do not biodegrade, they remain polluting the environment for many years, to be trampled on, or to create 'hot spots' alongside paths.

Remember that leaving your dog's poo in the countryside is not just intensely antisocial, it's also unlawful. It is an offence to leave dog faeces in the environment, with potential fines ranging from £100 to £1000. It doesn't matter if you didn't notice or you didn't have a bag with you, that's no defence in the law!

There is no dog poo fairy that will collect your dog poo bags and put them in a bin for you. It won't collect them from trees or bushes, from next to your car as you drive away, from the side of the path or from anywhere else you choose to forget about them.

It's your dog and your responsibility to dispose of its waste properly.

**The best reason to bag it and bin it, is to protect our amazing countryside, so that we can all enjoy it to the full.**

<https://www.nhs.uk/conditions/toxocariasis>

<https://biomedcentral.com/bugbitten/2018/06/22/dog-poo-cause-abortions-cattle>

Costing the Earth: Radio 4: 04/10/22 An Environmental Paw Print

The Anti-social Behaviour, Crime and Policing Act 2014: Section 67

[Info@forestryengland.uk](mailto:Info@forestryengland.uk)



## SCHOOL DATES

**Term 1: 4 September to 20 October**

**Holiday: 21 to 29 October**

**Term 2: 30 October to 15 December**

**Holiday: 16 December to 1 January**



**St Peter's Church  
Staple Fitzpaine  
29<sup>th</sup> September**

**Community Café - 10am - 12pm**

**Have a coffee and cake and  
don't forget to donate!**





## **Summer Quiz Night**

***By Jacq Wanstall***

On Friday, 7<sup>th</sup> July, Neroche Hall was once again host to the popular Quiz Night. Andrew Morgan, our wonderful Quiz Master, had put a huge amount of work into eight rounds of challenging questions, and the eager quizzers were raring to start.

Keeping with tradition, the evening kicked off the with General Knowledge round, which was the most difficult of all. The average score on this round was only 6.2 out of 10, so there was no easing the teams in!

Then followed some rounds which yielded better scores, covering Science & Nature, Shakespeare, and Film & TV. The Tom, Dick and Harry round was fun, with all the answers featuring one of those names, this also gave the quizzers a bit of a clue, so the average score went up to an impressive 8.4.

There were no fish and chips at this Quiz Night, so everybody brought their own snacks and drinks. The competition was strong all evening, and by Round 4, there was only 4 points between all the teams.

During the mid-evening break, the teams spent time on the Anagram round, although, we could see people pondering these questions throughout the evening. It is safe to say that having a little more time helped, as the average score for these questions were 17.7 out of 20.

After a wonderful 8 rounds of questions, finishing with the Film & TV, all eyes were then on the scoring team of Mark and Jacq Wanstall as they totted up all the figures to find out who was victorious.

To say it was close is an understatement, there was only 1 point between 1<sup>st</sup> and 2<sup>nd</sup> place and 3<sup>rd</sup> place were only 2 points behind them. You could cut the tension with a knife as results were read out!

The winning team was Only Joshing, consisting of Paul Hart (all things esoteric and technical), Alan Perrior (trivia and 1960s pop and rock music), Jill Perrior (history and horror literature), Norman Llewellyn (sport), Sara Llewellyn (natural history and nursery rhymes) and

Josh Llewelyn (anagrams). Big commiserations go to The Impossibles, who came a very, very close second.

A huge well done, to all who came along and took part, these evenings are crucial to Neroche Hall's fundraising, so thank you. Also, a big thank you those who helped run the event. We look forward to seeing you all again at the Fish & Chip Quiz Night on Friday, 24<sup>th</sup> November.

For those who missed the evening, here are a few of the Anagram questions to get you thinking.

Anagram – NOT PUG. Clue Film. 2 words

Anagram – RUM PET FROGS. Clue Film. 2 words

Anagram – BUILT TO STAY FREE. Clue Landmark. 3 words

Anagram – UP ON SHADY EYESORE. Clue Building. 3 words

Anagram – OPEN CHANGE Clue Capital City. 1 word



Answers

Top Gun

Forest Gump

Statue of Liberty

Sydney Opera House

Copenhagen

# Mark's South West Coast Path Challenge

*By Mark Pope*



If you  
Climb 115,000 ft,  
Walk 630 miles,  
Cross 230 bridges,  
Climb over 436 styles,  
Open 880 gates,  
Pass 4000 Coast path signs,  
And, of course, climb 30,000 steps,  
What have you got? the South West Coast Path, the longest marked trail in the UK.

That is what I found out when on 3<sup>rd</sup> April I left Minehead to start my challenge. I wanted to do something to get away for a while and remember Julie. I had time walking on my own and time walking with many friends. I also wanted to put something back, and to that end set up a Just Giving page, for two very special charities, MNDA and St Margaret's Hospice.

Our aim being to help MNDA fund research into a cure for this horrible disease. The one thing Tom, Emily and I had not been able to do was to cuddle Julie. That was until we went into the hospice where they had a cuddle bed, in effect a double hospital bed. This enabled us all to cuddle Julie. After Julie's death, we decided we would like to fund raise for another cuddle bed for the hospice.

I started out with an aim of raising £5000. Thanks to many people's







generosity the giving page now stands at over £12000. And we have also had a large donation direct to St. Margaret's Hospice, meaning we can nearly now purchase a cuddle bed.

The challenge was far tougher than I imagined both physically and mentally. I gained some company on the walk in the form of some very painful blisters. The views on the walk were amazing and I would recommend it to anyone, maybe do it in smaller chunks. We are so very lucky to have such incredible scenery on our doorstep.

I finished the challenge on the 20<sup>th</sup> of May at South Haven point, walking the last couple of days with Tom and Emily. Then, at the finish I was greeted by many friends who were waiting – truly a moment I will never forget.

At this point I want to thank all those people who supported me on the walk, from those who walked with me, to putting me up for the night, to giving me words of support when things got tough, and for the so many generous donations.

I think Julie would have been proud and also thought I was completely mad to do it.

<https://donate.giveasyoulive.com/fundraising/staple-farm>





# CRAFT FAIR

**Saturday 21st October 2023  
10.30am to 3pm**

**NEROCHE HALL, BICKENHALL TA3 6TY**

**A wide variety of stalls offering jewellery,  
cards, pottery, homeware, art, Christmas  
goodies, preserves and much much more!**

***Buy your Christmas presents here***

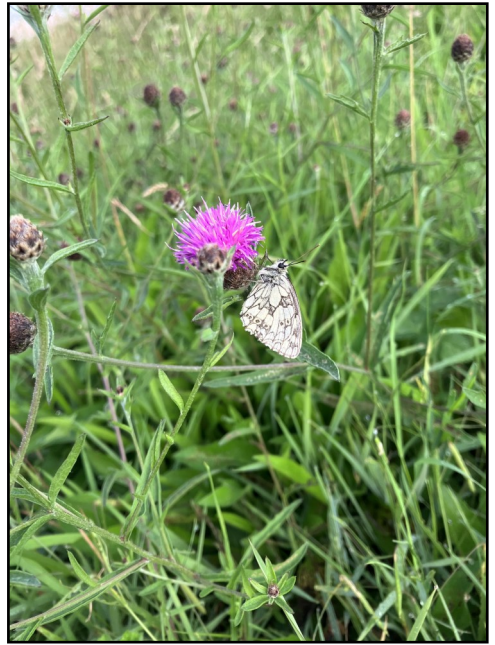
**Free admission and free parking**

**Refreshments on sale including  
Coffee, Tea and Cakes**

## Farming at Staple Farm

*By Tom Pope*

As July becomes August, wheat harvest gets closer and closer at Staple Farm. This year due to the very dry and warm weather earlier in the year, however distant a memory it seems, the wheat is very early. In previous years we have often still been cutting wheat in September as we barely start before the middle of August. This year however, our wheat would have been ready to be cut in July. Unfortunately, the weather has not allowed this to happen so far because we can only cut the wheat when it is below a certain percentage of moisture. If it is too wet, it is difficult to sell and store. So, we will have to keep waiting and hope we get a break in the weather sooner rather than later.



The chickens continue to keep us busy here and are currently laying around 29-30,000 eggs per day which is close to 3 tonne of eggs! Their 'lockdown' for avian influenza has now ended and they are able to get out and explore. Due to them being housed since birth it is quite a big step for a lot of them to venture outside so amazingly, despite the doors being open, only between 10-20 venture outside most days to scratch around in the wood chip we put down for them. Avian influenza continues to be a concern for poultry farmers. There are areas of the country where huge numbers of dead seabirds are being washed up on the coast after succumbing to the disease. Sadly, it looks very likely that when the autumn comes and the disease is more prevalent, that another lockdown may be enforced.

Many of our fields have grassy margins with plenty of wildflowers to see in them. There are a couple of wider wildflower strips which are close to the farm which are absolutely beautiful at this time of year with a huge variety of flowers and plenty of bees and butterflies enjoying them. If you are walking around the fields, make sure you keep an eye out for some of them.





### 2023 Fixtures

Fixture	Gates Open	First Race	Last Race
Thursday 16th November	11.15am	1.15pm	3.45pm*
Thursday 30th November	10.40am	12.40pm	3.25pm*
Thursday 14th December	10.28am	12.28pm	3.40pm
Saturday 30th December	10.55am	12.55pm	3.35pm





## Pentecost Experience Day – Thurlbear School

We were delighted to welcome our brilliant Ministry Team, led by Rev Joanna Friend, into school to lead a Pentecost Experience for our pupils, in our final days before Half Term.

They told the Pentecost Story through stories, thoughts and activities, all relating to the key words: "**Waiting, Sharing, Receiving, Telling, Doing and Growing**".

Throughout the day, every class had time to talk, roleplay, draw, write and pray together; that's 7 classes and 208 pupils, so a busy time! The sun shone and it was a brilliant day, and we thank the Team for their passion, time and enthusiasm with our pupils. One activity was to write a prayer/word/phrase on a flag, which would then be made into bunting which was hung on our fence to share with families.

"When you are looking for that spiritual experience, then what better Team to invite into school than Rev Joanna and the brilliant Ministry team? They portrayed the power of the Pentecost so well to our children." commented Head, Steve Gillan, "They were so keen to share this with the whole school and it is a vital cog in the parts that make us a Church School."

There is no better way to evaluate impact than looking at the response of the pupils themselves. Isabella, Year 5, wrote her prayer in only 2 minutes: "Thank you for all you have done for this world, and for helping me when I need it. Help me cope with changes whether significant or not. I wish to grow into a wise person, but I can only do that with your help and guidance."





# St Peter's Church, Staple Fitzpaine Flower Guild

*By Jacqueline Kolkowski*

Since May the team have produced some stunning displays including Kath Michael's regal triumph for the King's Coronation. In June, Tina produced a display with flowers all from her garden and the roses smelt delightful.

Sadly, some of the displays produced have been for funeral services of those we have known, although it was an honour for us to produce displays that have reflected their lives. Kath's pedestal for Mick Donovan in copper and gold colours was to reflect the part of his life as a coppersmith making stills in London. For Jim Balance, the Guild produced displays that reflected his great love of his woods.

We look forward to Harvest Festival when all the Guild get together to decorate the church with the colours and fruits of Autumn.

If you are interested in joining the flower guild, please do contact me at [Jacqueline.Kolkowski@btinternet.com](mailto:Jacqueline.Kolkowski@btinternet.com)



*Tina's Pedestal*



*Kath's Coronation Display*



*Peta's Pedestal*



# **Neroche Hall Fish 'n' Chip Quiz**

**Friday, 24<sup>th</sup> November**

Doors open 7pm for prompt start 7.30pm

Maximum of 6 per team -  
£4 per person entry  
(Food extra)

BYO beer / wine and a glass!

Advance booking essential from 1<sup>st</sup> November  
on 01823 480286

Email: [r.davies507@btinternet.com](mailto:r.davies507@btinternet.com)







## Bickenhall and District WI

Come along either as a member or a visitor on the 2<sup>nd</sup> Wednesday of the month 7.30pm at Neroche Parish Hall

### Speakers

Sept 13<sup>th</sup> Seated Yoga

Oct 11<sup>th</sup> Boo Botanicals

Nov 8<sup>th</sup> Complementary Therapies

Dec 13<sup>th</sup> Rhythm Drumming

For further information about the WI or our programme, please contact Frances Alford (our secretary) at 01460 234245 or [fran.alford@hotmail.co.uk](mailto:fran.alford@hotmail.co.uk)

## Neroche Thursday Lunch Club

Neroche Hall  
12.30pm for 1pm

7th September, 5th October, 2nd November,  
7th December



Come along to Neroche Hall and enjoy a superb home-cooked lunch in wonderful company for just £8pp (transport and special diets can be arranged). Meet old friends and make new acquaintances - ideal for both long term residents and those who have recently arrived in the community. A wonderful way to spend a weekday lunchtime.

Advance booking is essential by the Monday prior to the lunch to book for catering purposes. Contact Alison Brown 01823 480441 or [aabrown.battens@gmail.com](mailto:aabrown.battens@gmail.com)

## Mount Fancy Reserve – Wardens Report

Those of you who walk the reserve from time to time will have noticed new bridges have been installed. There are five streams that cross the public footpaths, some of which are in very soft, muddy ground and others that have dug themselves in deeper and wider. As Warden I was growing concerned and initiated discussion with Young Somerset (<https://www.youngsomerset.org.uk/>) apprentices to see if they could fashion a safe bridge crossing or two. The new Somerset Council came up trumps and have installed three new bridge crossing points and improved access across another.



Each year Butterfly Conservation offer their members several guided walks spread around the county

and across the calendar. This year, with the generous support from Shutes Farmhouse to accommodate the additional parking, Anna and I agreed to offer a guided walk around Mount Fancy Reserve. As this was our first such venture, we were uncertain what the turnout might be, just six or perhaps twenty-six. In preparation I managed to use a scheduled Neroche Conservation Volunteers (NCV) day on the reserve, to clear the intended walk route of all overhanging trees and vegetation to provide more secure passage for all. We now know that flaming July was instead a very damp wet squib. The guided walk had to be cancelled at the last moment as the weather forecast for the day was dire.

Hopefully, many of you will have played your part during the Big Butterfly Count in July/August, run by Butterfly Conservation, where you sat in the open for 15 minutes, managed to find a sunny day and

used their app to identify and count what you saw. Our valiant transect walkers have been, since the beginning of April, doing their weekly fixed route walks, on sunny, warm, dry, still days (when they can find one) counting what they see. Yet again it was a cold wet Spring and hardly any of the expected butterflies were seen. The Common Blue was notable only by their scarce numbers. Then, if you remember, there was eventually that long dry hot period when the flora burst into life and butterflies started to be seen in good numbers. This year was noteworthy in the numbers of Ringlet, Gatekeepers again and Marbled Whites that were recorded. There were initially fears that the Silver Washed Fritillary had crashed although then they did come out in full strength, just that little later in the year. Butterflies have very many varied characteristics; differences between male and female forms, their top wings to their underside wings, how many generations (some with varying sizes) in the year they go through, their life span, just a few days to some even over winter (as butterflies) and whether freshly emerged or aged, faded and battered. All of which makes getting to know more about butterflies so fascinating. What better way for you to get to know them than letting us know you are happy to be on a stand-by callout. Willing to come along just as a recorder when the team is short-handed on one of those changeable weather days. Do get in touch with Anna at [annabcwarden@gmail.com](mailto:annabcwarden@gmail.com) in the first instance and she can connect you to one of our four local transects groups.



*Ringlet*





*Silver Washed Fritillary*



*Marbled White*

Then there is the annual problem with the bracken. Left to itself, as an aggressive plant, it will spread and grow ever more vigorous, as you will have seen when you walk around the reserve. Contractors have been used in some of the more suitable areas with their machines. Experience is beginning to indicate that flailing the bracken (as they do with hedgerows) result in a thick mat of mulch that smother the ground flora and which bramble relish. The strategy, which we have tried and is proving successful, is to hand cut the bracken then rake it off.

Where it has been done over several years the ground flora is very varied and appears to be thriving. Whilst the bracken is notably weaker in its growth, as with all things in nature, it is not that simple. Some of the more specialist butterflies we are hoping to retain, or to attract back, make use of the micro-climate created beneath a thatch for dead bracken to shelter overnight or to even over-winter. Our strategy has been revised for this year where we are now raking the cut bracken into windrows.

It will be interesting to see if this proves successful, although it entails a lot of manual effort. Though we make use of NCV we need to be doing more. Which is why we now have our own volunteer team, **the Fancy Volunteers**. Do give it go. Come along and spend the day with us, working with hand tools out in the open and knowing you are contributing in a noticeable way to the improvement in wildlife on this wonderful reserve. All the details are on the website <https://fancyvolunteers.weebly.com> and on Facebook #fancyvolunteers





## **Nom Nom Pizza at Neroche Hall**

**Every other Monday  
(28<sup>th</sup> August onwards)**

**5pm - 8pm**

**Delicious wood fired pizzas - full menu  
at**

**[www.nomnompizza.co.uk](http://www.nomnompizza.co.uk)**

**Phone or text the hotline between  
10am and 4pm to pre-order  
(07950 254427)**

## News from Your MP

*By Rebecca Pow*

Hello again,

### **TAUNTON TICKET OFFICE CONSULTATION**

Proposed changes to the ticket offices at our rail stations is attracting much attention and I've received many emails and letters from constituents about the situation, relating to Taunton station. The current proposals will see staff move from behind the ticket office screens to more visible and accessible roles around stations with a view in GWR's terms, to 'better support

customers'; needless to say, the idea of change can bring concerns, I have been in liaison with GWR over this and the time scale for their consultation has been extended until September 1st, so do make sure you take part if this is relevant to you or your family.



I use Taunton station on a regular basis, and I have spoken to some of those working to understand what the proposed changes might mean here. I have been assured that the station will remain open for the same hours as it is today with no changes to access for waiting rooms, toilets and lifts and the needs of those with disabilities will be taken into account, something I stressed I will continue to make the point on if I don't see enough action. The idea is that staff will be at the station to offer advice on tickets/journeys and to help buy tickets through the Ticket Vending Machines, or to offer help and advice on digital purchase.

It is important to note that ticket offices have seen a significant decline in use over the last decade. In 2022/23, around 1 in 10 transactions occurred at a ticket office, this is down from 1 in 3 a decade earlier and equates to 13 per cent of total revenue, yet the number of ticket offices has not substantially changed.

Taunton is a much-used station and under this Government it has had significant investment to upgrade the facilities, including the multi storey car park and new road junction. Passenger numbers continue to hold up well post-Covid19 and it's important that the station can continue to service its customers well to ensure a sustainable future, so we must ensure it is fit for purpose for the decades ahead. To take part in the consultation email:

[TicketOffice.GWR@transportfocus.org.uk](mailto:TicketOffice.GWR@transportfocus.org.uk)

Closes **Friday 1 September**.

## **£87M SURGICAL CENTRE FOR MUSGROVE PARK HOSPITAL**

At the end of July, I was thrilled to formally cut the turf to mark the official start of the construction of the new state of the art £87m surgical centre. Getting to this point is a huge achievement for all those who have worked so hard on this project over many years, and I have been proud to be involved both locally and in Westminster and delighted that the Government is delivering on this project.

Having witnessed the dilapidated fabric of the theatres first hand myself (when I went in for an operation) I was determined to do all I could to work with the hospital Trust to develop well deserved updated facilities. So, back in 2018, I secured a debate in Parliament calling for new hospital theatres to replace the outdated surgery facilities; I followed this with a petition which attracted a phenomenal 6,000 signatures which I duly presented in Parliament. Further work with the NHS Foundation Trust and close engagement with the Department of Health saw the funding secured which has brought us to this point. The new theatres will of course benefit so many across



Taunton Deane and wider Somerset and will also provide the hardworking and professional staff at Musgrove with the facilities they need for the future. More widely, I am delighted that the Government remain committed to the upgrade of the entire hospital site, an ambition I've been working on over many years, and it remains on track for completion by 2030. I joined the Secretary of State for Health, Steve Barclay at Musgrove earlier this Summer to discuss the full extent of what is proposed, in particular, the urgent need for a new maternity unit (I had all my babies there and it is still in WW2 buildings).

## TAX CUT FOR PUBS

Our pubs in our urban areas but especially in our villages like Staple Fitzpaine, Hatch Beauchamp, and many more besides, play a vital role, supporting not



only the economy but our local community, acting as key meeting places for many. So, I welcome the recently announced 'Brexit Pubs Guarantee' which pledges that the duty pubs and bars pay on these drinks will always be less than applied by retailers. This means that the duty paid on drinks on tap in pubs will be up to 11p lower than at the supermarket - designed to help them compete on a level playing field so that they can continue to thrive at the heart of our communities. The Government has taken advantage of Brexit to simplify the duty system which now also sees drinks taxed by strength for the first time and a new relief – named Small Producer Relief – to help small businesses and start-ups create new drinks, innovate and grow. We have many craft drinks businesses here and this should help them as well as cider makers, with a lower rate of duty now in effect on a range of different ciders.



## **£850k TO IMPROVE LOWLAND PEAT ON THE SOMERSET LEVELS**

Peatlands are an iconic feature of our landscapes and the UK's largest store of carbon. Our lowland peatlands, including across the Somerset Levels and Moors, provide some of our

most valuable agricultural soils, and if managed sustainably, can contribute to food security for years to come. Reducing greenhouse gas emissions by rewetting our peatlands will be vital to the UK's efforts to achieve net zero emissions by 2050. I am therefore absolutely delighted that over £850k has been awarded to two projects in my constituency to help bolster our local lowland peatlands and in doing so enhancing carbon storage, paving the way for a more sustainable future.



Coates English Willow have been awarded over £365k for their project to use willow to produce a sustainable, renewable product whilst protecting and preserving the peat on West Sedgemoor. The project will research and develop new science and technology for more efficient planting, with lower herbicide use, and improved harvesting practices and develop a high value product to provide sustainability to farming businesses.

In addition, the Faring and Wildlife Advisory Group Southwest have been awarded just under £490k to help explore a viable land use on multiple pockets of land across the Somerset Levels & Moors, overcoming economic and cultural barriers to raising water levels across hydrological blocks of peat. It will provide an income stream for owners of the lowest-lying fields, enabling water tables to be raised in higher/drier fields and reducing carbon emissions without expensive hydrological engineering works. Further, it will explore paludiculture to improve water quality and assess if it can play a role in supporting ecological diversity of the Somerset Levels and Moors through targeted use within the landscape.

## **DIY WASTE**

Still on an environmental note, I sense great pride in our local communities wherever I go, however, one thing that I get many letters about is the blight of fly tipping and litter which spoils our beautiful towns and countryside with just a few selfish people ruining the area for everyone else. I have been working in my Ministerial capacity to come up with solutions and it's great news that in July we announced that on-the-spot fines for litter, graffiti and fly-tipping are set to rise as part of the PM's special crackdown on anti-social behaviour. Fines for littering will increase to £500 and up to £1000 for fly tipping. We have also launched a consultation on ringfencing the receipts from fines to fund local authorities' enforcement and clean-up activities which would make a real difference.

## **WATER POLLUTION**

And finally, in my capacity as Environment Minister, I announced last month the latest in a range of initiatives that will help to tackle water pollution. Those that pollute the environment will face unlimited penalties (up from the current limit of £250,000). This will deliver a proportionate punishment for operators that breach their permits and harm our rivers, seas, and precious habitats - it was also one of the measures set out in our Plan for Water earlier this year. The government has acted swiftly so that this new unlimited penalty will be enshrined in law, further strengthening the power of regulators to hold polluters to account, an issue I know many of my constituents care deeply about as do I. It's because of all the monitoring this Government has put in place that we know what is going on in terms of unacceptable use of storm sewage overflows (designed for emergencies only) and we have put a plan in place for the largest investment in water industry history to clean up our waters further, amounting to £56bn by 2050, with much of this already underway. By the way, we do have the cleanest designated bathing waters than we have ever had, with almost 93% classed as good or excellent and the best quality drinking water coming out of our taps of almost any country in the world.

As ever please get in touch if I can be of any help.



# **ANNUAL VILLAGE CRICKET MATCH**

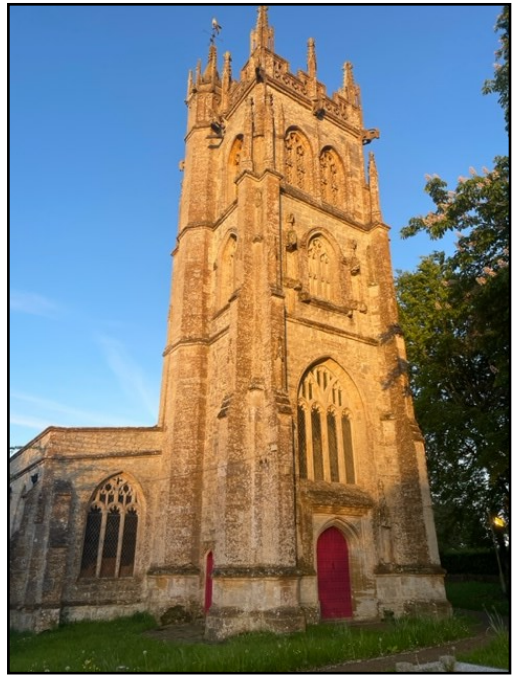
**Stoke St Mary Cricket Ground  
Sunday 3rd September 2023  
from 2pm**

**The annual competition between Staple  
Fitzpaine, Thurlbear, Curland, Orchard  
Portman and Stoke St Mary  
for the Walker Cup**

**A great afternoon's entertainment with  
some very competitive cricket!**

## St Peter's Church Update

The summer is typically quiet at St Peter's as many people are away. However, we had a lovely 8.30 service on July 16<sup>th</sup>. The sun was shining through the stained-glass windows where we sat in the choir, and it was quite magical. We also had the fun and excitement of the scarecrow competition and busy BBQ at the end of the week – which is reported elsewhere in the newsletter. Mark Porter led a reflective service on July 19 on the subject of 'Joy' which had great feedback from the people who attended. The Pop-Up Café on a Friday morning is a great opportunity for people to meet and chat and eat excellent cakes!



Looking forward, there's lots in the pipeline for the next few months. One of our major festivals is Harvest, which means so much to so many people in our community. We are celebrating Harvest Festival on September 17<sup>th</sup> with a Harvest Supper at 5pm followed by a service at 6pm. The church always looks wonderful and whatever the weather we have a great time, and it would be lovely to see you.

We have a lay-lead service on September 3 at 10am and a reflective service at 6.30pm on September 20. There will also be a 10am Benefice Service on August 20<sup>th</sup>. Please check our website for all our services and come along if you can. We aim to make St Peter's a vibrant hub for our community and having nearly 50 people of all ages at the Scarecrow BBQ was such fun. We are aware that we need more people to come more often to our services to make sure that our beautiful church, which has served our community for many centuries, continues to be viable.

We have some other plans and are looking for people to get involved. Mark would like to renovate the Mission Hut as a Community Asset and



is looking for people who can help with some carpentry, basic plumbing, and lighting, and painting and decorating in the autumn. He would also like to discuss with anyone interested in the community how this space could be used. If you would like to volunteer, or have any ideas about using the Mission Hut in a unique way, please contact him on 07714 105888 or [markp@indinet.net](mailto:markp@indinet.net)

Looking forward to 2024, we will be hosting the St Peter's Fete at Winterwell, provisionally on June 15<sup>th</sup>. We learned a lot of lessons from the first one we hosted last year, and one of the lessons is to get going sooner and have more people involved! If you can spare some time to help with planning, or have any ideas to make the fete really fantastic, please contact me on 07711 228606 or [rebecca@indinet.net](mailto:rebecca@indinet.net)

Also in 2024, as briefly mentioned in the article about the Scarecrow competition, we will be holding a new competition at the church. This may well mainly involve teddies parachuting off the church tower, although we will be encouraging a full range of imaginative flights with a variety of prizes.



# Taunton Flower Show – A Volunteer’s Journey

*By Jacqueline Kolkowski*



Taunton Flower Show is the oldest flower show in the country, just on our doorstep. The first show was held in September 1831, while 1851 saw the first show held in Vivary Park. Throughout its long history the show has had horticulture at its heart and in recognition it continues to attract a new generation of green fingered enthusiasts. Still at the heart of the show are the large competitive class and floral class marquees. The competitive classes are open to all and consist of approximately 250 different categories for amateur gardeners, crafters, floral artists and children. As you know there is much more to the show with traders and their displays of plants and flowers, along with a wide range of other stalls. The arena in the centre of the park provides entertainment throughout the day, also there is a children’s zone, a bee and honey show (a must to see) and the wine show!

Taunton Flower Show is a community event attracting many thousands of local residents as well as many other visitors. However, this show would not be possible without all the willing help of its hundreds of volunteers across all aspects of the show from setting up, parking stewards, helping to receive exhibits, supporting on show days in many varied roles, and finally helping with shutting down the show.

This is how I got involved!

Before I came to live in Somerset, I visited the show and loved it - being a keen gardener it was a delight. After moving to Curland, I was talking to Joy Larkman who at that time organised the stewards for the competition tent on show days and was looking for help in receiving paintings from exhibitors. I was introduced to Angela Colby who runs the children’s section!!!! I still did the pictures, and then on show days I helped with the crafts that were run in the children’s competition area. I was delighted then to be asked if I would like to be involved in the group who discussed and decided on the children’s competition classes. These classes involve fun with flowers where the different age groups are given all the props and flowers to produce a display on the Thursday evening. It is just lovely to see how much fun children get from working with flowers from age groups under 7 up to 17. I am sure that’s how the members of St Peter’s Flower Guild feel when we do similar things in the church. This year the theme for the young people’s

section was reuse and recycle. The under sevens had to display their flowers in tin cans (thanks to members of the Flower Guild for their donations). It was a very popular class that attracted 16 entries, when we were only expecting 10!!!!



My involvement at the show has increased over the years from 4 hours to 4 days. I am now involved in many things as a volunteer to support the running of this amazing show. I love show days seeing the children (and the big children) running in to see if they have won, and interacting with so many people interested in horticulture, from amateurs to professionals, and wonderful families who have grown up supporting the flower show in so many ways.

Many people in our villages have been or are still involved with the show as volunteers, judges, competitors, and members. This year, Carole Wensley-Dodd volunteered and entered an exhibit in the show, for the first time. Her wonderful dahlias won FIRST PRIZE in the novice section. Well done Carole - onwards and upwards in the next class!



If you have never been to the show, come along next year to

experience a very special event in our County Town. You might even like to like to volunteer or perhaps enter the show. For further information see the web site [www.tauntonfs.co.uk](http://www.tauntonfs.co.uk) or even chat to me!

P.S. Jac also won first prize for her Coronation vase of cut flowers – well done!!

## Is your Business using the Neroche Villages Website?

One of the main reasons for developing the Neroche Villages website was to promote our local business. It does this in two ways, both designed to help them become better known and more easily found by those needing their services.

All businesses operating within Neroche Parish are entitled to a **free entry on the Business pages of the website**. They are listed in one or more of seven categories: Accommodation, Arts and Crafts, Building and Gardening, Equine, Farm and Agriculture, Food and Drink, Leisure, and Services. No business is too large or small to appear and there are many involving one person. Each free entry lists the name of the business, type of activity, contact details, address and telephone number/s. Many pay £10 per annum to have an email address and/or website added to the entry.

The **Advertisers page** allows a business to provide more details of its activities for an annual charge of £30. We can help you create your advertisement.

Please have a look at the website at [www.nerochevillages.org.uk](http://www.nerochevillages.org.uk). Use the Contact page to get back with your details or to correct any entry. We are keen to have all businesses listed on the website, and with more than a basic Business page entry. All additional fees are used to fund the activities of the Neroche Communication Action Group.

## ARE YOU NEW TO THE AREA?

Here are the different ways you can find out what's happening in Neroche from the  
**Communication Action Group:-**

**Neroche Newsletter** is delivered free to every household each quarter – full of upcoming events, articles on recent events, and updates from local Groups and leaders. Contact us at [nerochenewsletter@gmail.com](mailto:nerochenewsletter@gmail.com)

**Neroche Villages Website** - the place for information from the Parish Council including planning applications, meeting minutes etc. You will also find information on local groups and clubs, events, News, local businesses, and details of the Blackdown Hills and Neroche Woodlanders.

[www.nerochevillages.org.uk](http://www.nerochevillages.org.uk)

**Neroche Email alert** – distributed every 3 to 4 weeks, bringing you information about local events, information from the Parish Council, and details of what's happening in our neighbouring villages. To sign up for the Email alert, just send your details to [nerocheemail@gmail.com](mailto:nerocheemail@gmail.com).

**Welcome to Neroche**



## The RSPCA Garden at RHS Chelsea Flower Show

The RSPCA will be celebrating its 200th anniversary in 2024 and to mark the start of the celebrations the RSPCA had a wildlife garden at Chelsea Flower Show this year.

Our garden was one of 15 Gardens for Good Causes, made possible thanks to Project Giving Back who have funded all the design, planting and build costs. The garden was designed by Martyn Wilson, an award-winning garden designer and RSPCA supporter.

Martyn's inspiration for the RSPCA wildlife garden came from visiting West Hatch back in 2022. Included within Martyn's design are:

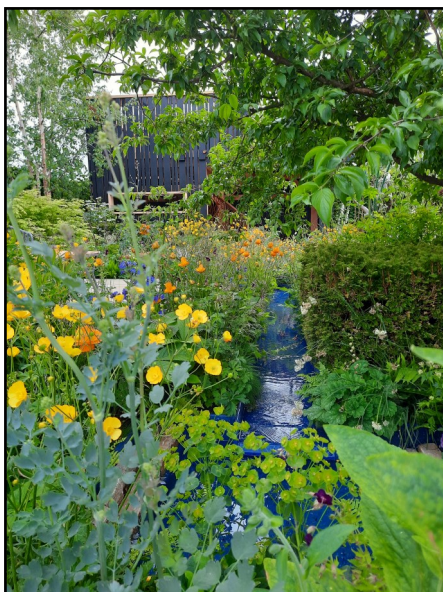
**A bird hide** - The perfect place to watch wildlife from.



**Nesting Boxes** - Grouped together specifically for sparrows which are an endangered species.

**A water feature** - Providing a safe place for animals to drink. Made from recycled post-consumer waste plastic to highlight the problem litter poses to wildlife.

**Dead Hedges** - Allows you to recycle pruning matter and encased in bench-



like open structures they are the perfect habitat for many species of wildlife including hedgehogs.

**Pollinator friendly planting** - Providing forage for a wide variety of pollinating insects that are in decline.



Sarah Bulpin who works at West Hatch was lucky enough to volunteer at the RSPCA Garden. It was a great opportunity for Sarah to talk to members of the public about the great work we all do at the centre for both wildlife and companion animals. Everyone she spoke to was supportive of the RSPCA and really keen to copy ideas from the show garden into their own outdoor spaces. Amazing news for wildlife!

The garden has now been relocated to RSPCA Stapeley Grange Wildlife Centre and education hub in Cheshire, where it will live on as a sanctuary for wildlife, staff, volunteers and visitors. It will also help provide animal welfare education to communities who have fewer opportunities to connect with the natural environment.

If you'd like to learn more about the RSPCA Wildlife Garden, including a 3D tour, please visit [rspca.org.uk/adviceandwelfare/garden/chelsea](https://www.rspca.org.uk/adviceandwelfare/garden/chelsea).

## Want to support children in Somerset? Then Route1 is looking for you!



Route1 Advocacy and Independent Visitors is a service that supports children and young people who are in care or have a social worker. They do this by matching volunteers with young people as either short term Advocates, or longer-term Independent Visitors.



- **Independent Visitors:** These volunteers make a long-term commitment to one child in care. They visit the child once or twice each month to build a trusting, supportive relationship and friendship that can sometimes last many years. This can bring life-changing experiences and opportunities to a the child or young person – and their Independent Visitor!
- **Advocates:** Volunteers work alongside individual children to ensure their voices are heard, and their wishes and feelings are taken into account when decisions are being made which affect them. Each child's support is usually short term and there is no expectation of a long-term commitment to any particular child.

Not only do these roles do amazing things for young people in Somerset, they represent great opportunities for local people to learn more about the services they support. Volunteering can be a great way into work in related areas.

“I would strongly encourage local residents to come and help children and families, do some real long term good, use and expand their existing skills and experience and make a huge difference to young people in Somerset,” said Cllr Tessa Munt, Lead Member for Children, Families & Education.

Your volunteering can be arranged to suit your availability. Your life experience will be highly valued, and you will be trained and supported in developing key skills.



If you're interested and want to find out more about volunteering with Somerset Council, please visit [volunteering.somerset.gov.uk](https://www.volunteering.somerset.gov.uk).

For more information about Route 1 Advocacy and Independent Visitors, you can contact us by emailing: [route1advocacy@somerset.gov.uk](mailto:route1advocacy@somerset.gov.uk), calling 01749 822801 and our website is [www.somerset.gov.uk/education-andfamilies/route1-advocacy](https://www.somerset.gov.uk/education-andfamilies/route1-advocacy).



follow us on social media





# YogaNess Yoga

My name is Vanessa Bourne, I live in Bickenhall and I am a Hatha Yoga Teacher, specialising in Subtle Yoga, a slow, mindful yoga, designed to suit everyone. This type of Yoga is specifically designed to reduce the effects of stress on the body, using subtle, nuanced and deliberate movement to optimise the nervous system, combating overwhelm and creating ease in the mind and body.

## Classes currently available:

At Neroche Village Hall – Tuesdays Mat Class  
10.30am-11.30am

At West Hatch Village Hall:  
Mondays 11-12pm – Chair Class  
Tuesdays – 7-8pm – Mat Class

Please contact me for class dates if you are interested or have any questions on suitability for you - all abilities catered for - I have equipment to borrow if needed.

[ness@yoganessyoga.co.uk](mailto:ness@yoganessyoga.co.uk)  
[www.yoganessyoga.co.uk](http://www.yoganessyoga.co.uk)

## The Greyhound Inn

Country pub with rooms

Open daily

01823 480227

<https://www.thegreyhoundinнтаunton.co.uk>



*Lending with Heart and Mind*

Somerset West  
and Taunton

## Somerset West and Taunton Council fund a not-for-profit loan scheme for homeowners and landlords\*.

We understand the expense of maintaining your home and we work with you to take the stress out of funding repairs, improvements or adaptations.

For a no-obligation assessment or more information visit [www.lendology.org.uk](http://www.lendology.org.uk) or call 01823 461099

\*subject to eligibility



# Events for your calendar

(Venue is Neroche Hall unless stated)

## September

Tuesday, 12th - Parish Council Meeting  
Wednesday, 13th - WI Meeting  
Wednesday, 20th - Quiz at The Greyhound

## October

Tuesday, 10th - Parish Council Meeting  
Wednesday, 11th - WI Meeting  
Wednesday, 18th - Quiz at The Greyhound  
Saturday, 21st - Craft Fair

## November

Saturday, 4th - Barn Dance  
Wednesday, 8th - WI Meeting  
Tuesday, 14th - Parish Council Meeting  
Wednesday, 15th - Quiz at The Greyhound  
Friday, 24th - Fish "n" Chip Quiz

For latest updates visit [www.nerochevillages.org.uk/events-calendar](http://www.nerochevillages.org.uk/events-calendar)

# Local Communication and Information

## **Websites:**

### **Neroche Villages** [www.nerochevillages.org.uk](http://www.nerochevillages.org.uk)

Community website run by the Neroche Communication Action Group. It has an up-to-date calendar of events; a news section; information about residents' action groups, including broadband, traffic; a business section and advertisements.

The website features a comprehensive list of clubs and organisations, including details of those in neighbouring parishes. It is also the website of Neroche Parish Council and lists its activities, agenda, minutes and reports.

### **Neroche Hall** [www.nerochehall.org.uk](http://www.nerochehall.org.uk)

The website lists the coming events, facilities and availability for hire of our village hall, and has an online booking form.

### **Church of England Seven Sowers Benefice** [www.sevensowers.org.uk](http://www.sevensowers.org.uk)

Has a calendar of events and church service times for Staple Fitzpaine and Orchard Portman churches, as well as other churches in the benefice.

## **Email Information:**

The Neroche Communication Action Group runs an Email Alert System for sending information to those wishing to receive it. **Please note the email address for the EMail Alert: [nerocheemail@gmail.com](mailto:nerocheemail@gmail.com)**

## **The Parish Magazine:**

Full information on benefice matters, a great source of news, coming events and general information, and details of many local businesses and services. For new subscriptions phone Alison Brown on 01823 480441.

### ***Many thanks for taking the time to read this Newsletter.***

*The views expressed in this newsletter do not necessarily represent those of the Editor or the Neroche Communication Action Group. Publication of an advertisement in, or with, the newsletter does not imply the Action Group's approval of the goods or services.*

**Newsletter Co-ordinator and Editor: Karen Learoyd -**  
[nerochenewsletter@gmail.com](mailto:nerochenewsletter@gmail.com)

**Treasurer: Mark Wanstall**

**Designer: Rachel Wakeman, Roche, Cornwall**

***Printed by Parish Magazine Printing - 01288 341617***